

Vantage Point

Your Partner in Agri Business • An AgVantage® Software, Inc. Electronic Publication • 877-282-6353 • www.agvantage.com

SEPTEMBER, 2016

This Issue:

National Conference Update.....p. 2
Trade Show Schedule.....p. 2
New Software Releases &
Releases Coming Soon.....p. 3-4

AGVANTAGE CUSTOMER SPOTLIGHT:

NEW VISION CO-OP

CORPORATE OFFICES: BREWSTER, MN

WEBSITE: NEWVISION.COOP

General Manager:

Frank McDowell (CEO)

Controller:

Cheryl Westerman (CFO)

Information for this article provided by:

Dean Knips, IT Manager

Number of Locations/ Branches, and Names: 16 Locations -
Adrian, Beaver Creek, Brewster, Dundee, Ellsworth, Heron Lake, Hills Country
Terminal, Hills, Jeffers, Lismore, Magnolia
Mountain Lake, Reading, Wilmont, Windom, and Worthington

Number of Employees (including all locations): 150

How long have you been using AgVantage Software? 5 years

Favorite Feature of AgVantage Software: Everyone would probably give you a different answer. eAgVantage has been popular, as well as emailing statements and documents.

Company Description (branches, products, size and location):

Grain, Feed, and Agronomy

16 grain locations, 3 feed mills: Windom, Worthington, and Magnolia

4 fertilizer plants with one under construction: Hills, Jeffers, Brewster, and Lismore

4 shuttle loading facilities on two railroads: Brewster, Heron Lake, Mt. Lake, and Hills

Something unique about your company that you would like to share with other AgVantage Software Customers:

Every scale ticket company-wide is applied directly with AgVantagePC Scale at all 16 branches. RFID readers are currently used at four locations, and IP-Display signs at two.

New Vision Co-op had six construction projects in progress during the summer of 2016.



NATIONAL CONFERENCE UPDATE

JUNE 21-23, 2017

LORI CAMPBELL, CONFERENCE MANAGER
LORIC@AGVANTAGE.COM

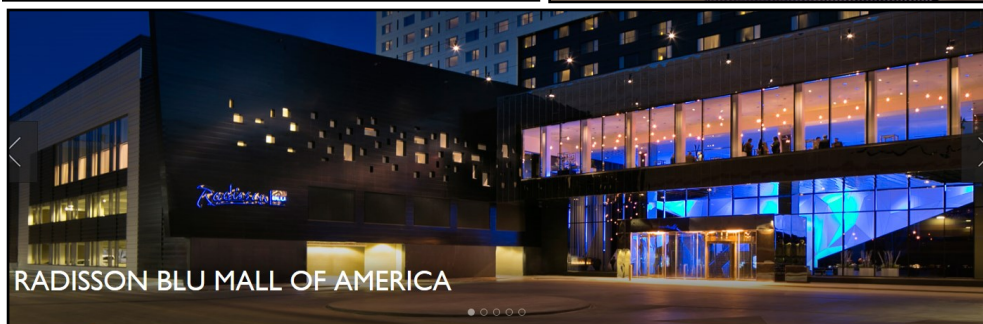
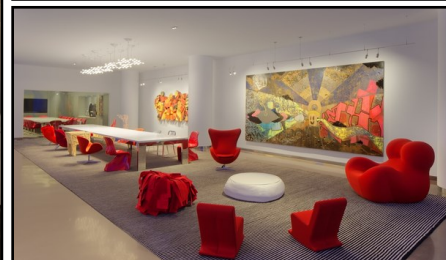


We are excited to announce that we will be returning to the Radisson Blu—Mall of America for our June 21-23, 2017 32nd National Conference & User Exchange! We held a conference there a few years ago when they first opened and absolutely loved it. It's a great property with a four diamond rating.

After our conference in 2013, the Radisson Blu's guest room prices shot up about 40% because the demand was so high. With the opening of more hotels close to the Mall of America this past year, competition is still strong, but not quite as tight and we managed to get a group guest room rate of \$159. Parking is free and there is a complimentary airport shuttle.

The conference schedule will remain similar to the one held last year. There will be a Welcome Reception on Tuesday evening, June 20th. Sessions will be held all day on Wednesday and Thursday, with a noon adjournment on Friday, June 23rd.

We hope you will join us in June, 2017!



SAVE THE DATE

AgVantage Executive Conference
"Leadership: Share the Vision"
Sanibel Harbour Marriott Resort & Spa
March 12-14, 2017

AgVantage Software, Inc. Trade Show Schedule

National Grain & Feed Conference & Trade Show
Chicago Marriott Downtown Magnificent Mile
December 11-13, Booth 509

Minnesota Grain and Feed Trade Show
Hyatt Regency Minneapolis, March 2-4

AgVantage Software • September, 2016

Update on New Releases & Software Releases Coming Soon

Bonnie Fohrman • Vice President, Programming • bonnief@agvantage.com



Newly Released AgVantage Software—Version 8:

See our Message Board for many Product Enhancements continuously available.



ACH

- Encrypted bank account information for ACH – Payroll and AP (256168)

Accounts Receivable

- CDD—Provided more selection criteria on 12 month aging (360849)
- Archived contract records (380015)
- Added budget start/end date in customer file F10 on screen (383424)
- Laser Fertilizer Bill of Lading added (389578)
- Increased balance on counter screen to include over 10 million (389240)

Contracts

- Created one contract for multiple tanks with the same item (358982)
- CDD—Ability to change contract fields (343145)

CRM (Customer Relations Manager)

- New CRM Activity Report (388335)

Edge

- New ability to have multiple selections in a drop down (384881)

Edge Accounts Payable

- Check Print Options added
- Added option to reconcile by range of check numbers (385878)
- Updated Pre-notification Flag (387161)
- ACH Created Pre-notification Transactions (339623)
- ACH Routing Notification (387164)
- ACH Constants Maintenance (387165)

Edge Grain Phase 1

- Beta

eDocument

- Added search by email address in maintain customer email (372335)
- New ability to track prescription medicated feed (371136)

Grain

- Settlement report – Added check number and selection by purchase class (295124)
- New report – Unassigned Purchase Contracts (319970)
- DPR – Inventory on Hand Omit locations with zero balances or activity (331937)
- EOM Valuation un-posted price adjustment needed undelivered bushels (384840)
- Now allows transfers between locations if no discount types are set up in crops (388538)

Interfaces

- Created an AP Receiving file from Red River (388745)
- Credit card transaction ability thru the AgVantage/SSI Interface (378212)

Inventory

- Now ignores negative cost records when valuing inventory FIFO (386911)

Continued from previous page

AgVantagePC Invoicing

- Added VFD prescriptions in PC Invoicing (386625)
- Added Tax codes with state and county codes (387100)

ETA—Employee Time And Attendance

- New option to print cards by default work code (383051)

Payroll

- Can now exit (F3) out of screen for payroll hand checks when no information entered (389476)

Patronage

- Equity screen – enhancements to screen format and sort (382898)

Software Releases Coming Soon

eAgVantage DPR

- Add Hedging to the Commodity DPR (350731)

eDocuments

- Create option to add List of Agronomy Customer email address (385217)

Edge

- Edge Agronomy Phase 2 Dispatching
- Edge Feed Phase 1

Edge Energy

- Track when Delivery Tickets and Listing Printed (339356)
- Add a delivery from one tank to another (368496)
- Allow comment access in tank maintenance and PC Dispatching (383422)
- Tanks that need to be painted (339535)

CMS

- Add prospect option (370897)

Edge Dispatch Mapping

- Email driver ability in Edge Energy (389979)

Feed

- Ability to add texture to feed order (376295)
- Force a 2000lb ration size (385239)

Interfaces

- Intevacon Fleet Card Interface (383596)

Patronage

- CDD Void a patronage check (333260)